

# AUDIOVOLT



**A1,A3,A4,A5,A6,A7,A8  
,Q2L,Q3,Q5,Q5L,Q7,Q8**



Car mounted wireless intelligent  
connection terminal

**Please note:**

Dear user, after installing this system, for some models without AUX that require sound transmission through the original car Bluetooth, please first enter the original car system Bluetooth phone page and use the car's "Bluetooth phone" to actively search or wait for the Bluetooth device "DC\_AUDIO\_BT\_\*\*\*\*" of this system. After the Bluetooth of this system is successfully connected to the car's Bluetooth phone, enter the original car Bluetooth audio function, Press the corresponding button again to switch to the system page and start subsequent operations.

**Disclaimer:**

Apple, Iphone, Carplay

Apple, iPhone, Carplay, and the Carplay logo are registered trademarks and ownership of Apple Corporation

Android, Google Maps, Android auto Waze Google

Android, Google Maps, Android auto, and Waze are registered trademarks and ownership of Google Corporation

Baidu, Carlife, and the Carlife logo are registered trademarks and ownership of Baidu Company

Huawei, Huawei Hicar, and the Hicar logo are registered trademarks and ownership of Huawei Corporation

NO.1

## / Box parameters and warranty

Overall dimensions of products : 148mm \*91mm \*29mm

Main chip model : T113-S

Power consumption current: 1A (rated) , 3A (Max)

Dominant frequency : 1.2GHz

operating temperature: -40°C~+85°C

Memory : 256MB DDRIII SDRAM

Ambient humidity: ≤98% (at45°C) , 65±5% (rated)

Storage space : 128MB NAND Flash

quiescent current: less than 3mA

Operating system : Linux

Storage temperature: -30~+85°C

Shutdown current: 300mA (Clock is on)

Working height : 15000feet (4573 )

running voltage : 9-16V, 14.4V (rated)

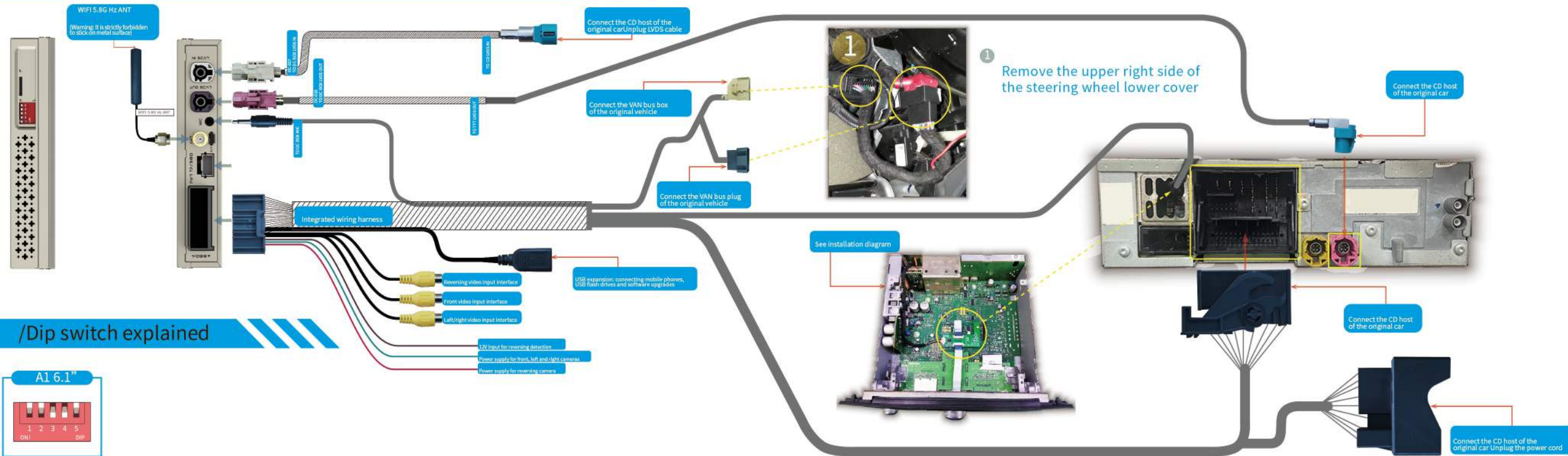
Drop test : 30inches (76cm)

≤1.5A. when the USB charging current is > 3A, the host computer of the radio and receiver should start the circuit protection function to control the current below 1.5A to avoid burning the product.

NO.2

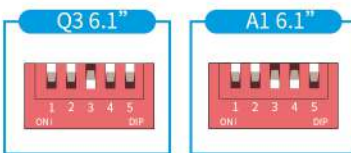
2G A1/Q3

/ Schematic diagram of connection



NO.2-1

/ Dip switch explained





Press and hold for 2 seconds to enter the system page

Short press back to the HOME page of the system

Voice awakening

Call answering

End call

System volume increases

System volume decreases



Control the media down

Return to the previous level

Control the media up

Press and hold for 2 seconds to enter the system page

Short press back to the HOME page of the system

Voice awakening

Call answering

End call

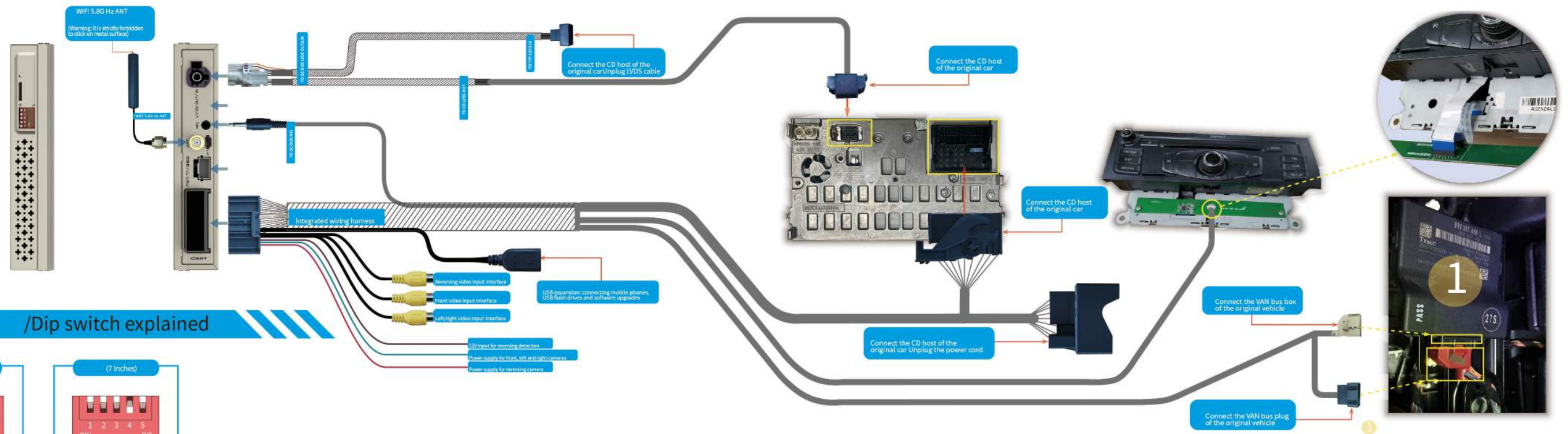
knob control system APP

Press to enter the APP function

The arrow keys control cursor movement

Please enter the aux channel of the original car before entering the system

1 2 3 4



(6.5 inches)



(7 inches)



Remove the left side of the glove box



knob control system APP

Press to enter the APP function

System volume increases

System volume decreases

Voice awakening

Call answering

End call

Press and hold for 2 seconds to enter the system page

Short press back to the HOME page of the system



The arrow keys control cursor movement



Enter the AUX channel of the original car, and the system automatically switches pages

Control the media down



Please select AUX mode before entering the system, and then enter the system operation

Voice awakening

Call answering

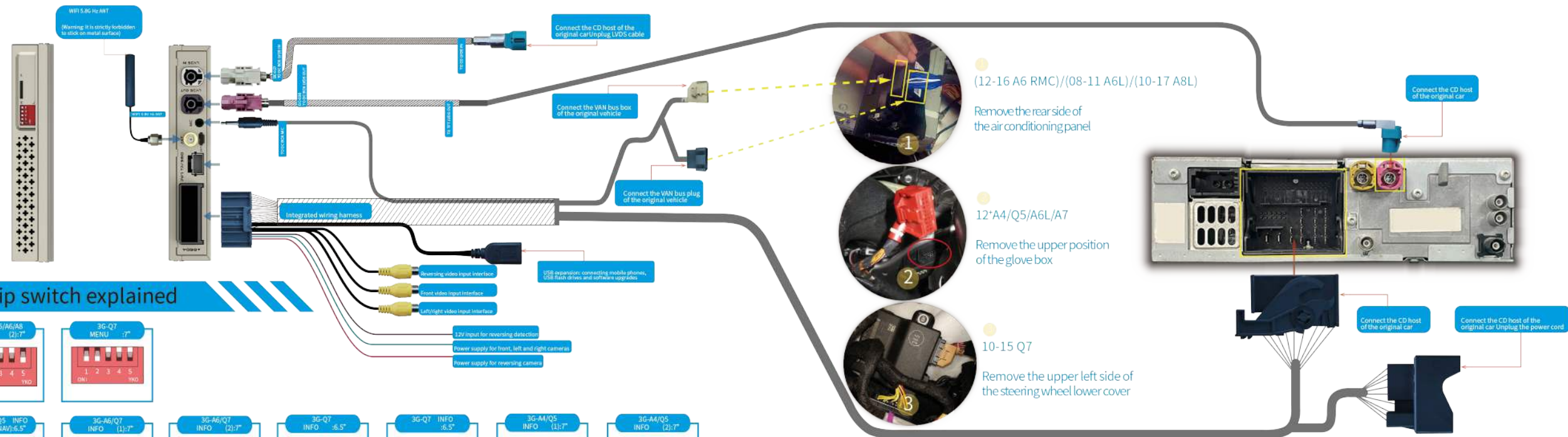
End call

Control the media up

Return to the previous level

knob control system APP

Press to enter the APP function





System volume increases

System volume decreases

Voice awakening

Call answering

End call

knob control system APP

Press to enter the APP function

The arrow keys control cursor movement

Voice awakening

Call answering

End call

Press and hold for 2 seconds to enter the system page

Short press back to the HOME page of the system

Control the media down

Return to the previous level

Please select AUX mode before entering the system,  
and then enter the system operation

System volume increases

System volume decreases

Please enter the aux channel of the  
original car before entering the system

Control the media up





Voice awakening

Call answering

End call

System volume increases

System volume decreases

1 2 3 4

The arrow keys control cursor movement

Control the media down

Control the media up

Please enter the aux channel of the original car before entering the system

knob control system APP

Press to enter the APP function

Please select AUX mode before entering the system, and then enter the system operation

Voice awakening

Call answering

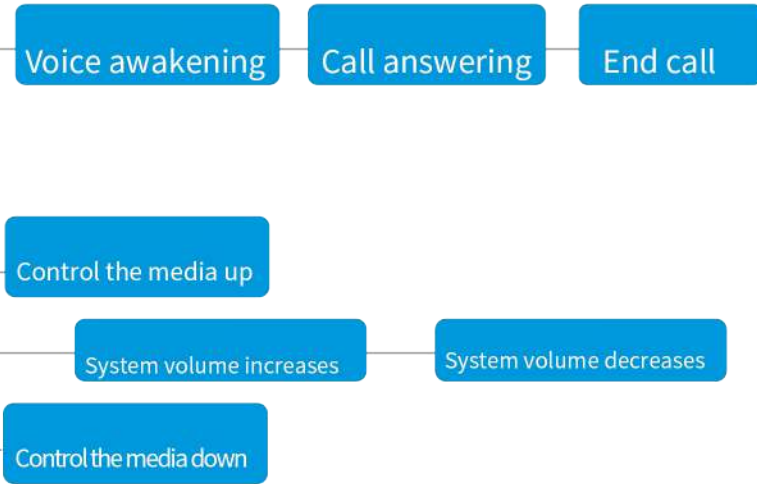
End call

Press and hold for 2 seconds to enter the system page

Short press back to the HOME page of the system

Return to the previous level





Press and hold for 2 seconds to enter the system page

Short press back to the HOME page of the system

Voice awakening

Call answering

End call



Please select AUX mode before entering the system, and then enter the system operation

Return to the previous level

Enter the AUX channel of the original car, and the system automatically switches pages

The arrow keys control cursor movement

knob control system APP

Press to enter the APP function



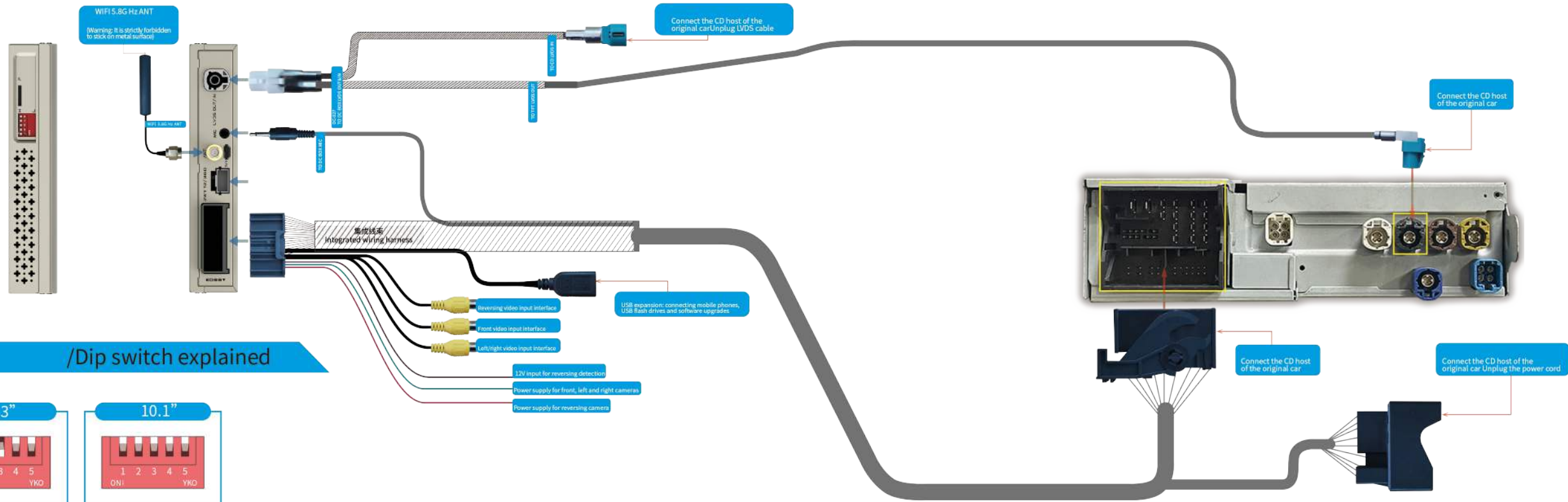
System volume increases

System volume decreases

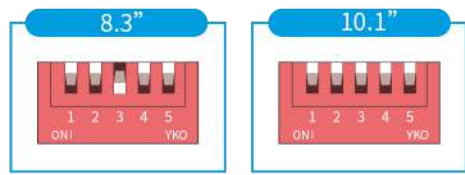
Control the media up

Control the media down

NO.11 MIB3 / Schematic diagram of connection



NO.11-1 / Dip switch explained





Voice awakening

Call answering

End call

Control the media up

System volume increases

System volume decreases

Control the media down

Press and hold for 2 seconds to enter the system page

Short press back to the HOME page of the system



Touch control APP related functions

System volume increases

System volume decreases

Control the media up

Control the media down

Before entering the system, please disconnect the Bluetooth connection between the original vehicle and the mobile phone and ignore the Bluetooth device. Then search for "DC\_audio BT - \* \* \* \*" on the original vehicle's Bluetooth phone and connect this device as the sound channel of the system. Finally, switch the system for other operations.